

Category 6 RJ45 24 Port Patch Panel

Specifications

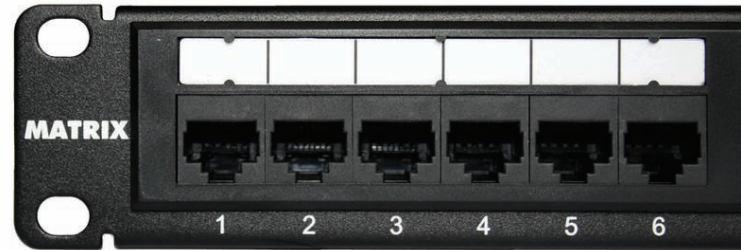
Qualified Category 6 Permanent

Link/Channel of EIA T568A

& T568B (ISO/IEC 11801)

24 Ports 19" 1U Height

Gold Plating: Gold Plated / Phosphor Bronze



Mechanical Performance

RJ45 Insertion Life: Min. of 750 Insertions

IDC Insertion Life: Min. of 200 Punchdowns (22-26 AWG Solid Wire)

Plug/Jack Contact Force: min. of 100g using an FCC approved plug

Environment Characteristics

Storage Temperature: -40°C ~ 70°C

Operating Temperature: -10°C ~ 60°C

Relative humidity: max 95% at 20°C

Electrical Performance

Insulation Resistance: 1000M Ω (under normal air conditions)

Contact Resistance: 7 m Ω (under normal air conditions)

Dielectric Intensity: AC 1000 Vrms 50Hz or 60Hz in 60s

